

# TransPonder

SUPPORT | RESOURCES | EDUCATION

# 2023 ANNUAL REPORT



# CONTENTS

A MESSAGE FROM OUR EXECUTIVE DIRECTOR.....	3
WHO WE ARE.....	4
OUR BOARD.....	5
OUR STAFF.....	6
WHAT WE DO.....	8
QUEER RESOURCE CENTER.....	8
SERVICES & RESOURCES .....	9
BEHAVIORAL HEALTH.....	10
PROGRAMS.....	11
IMPACT HIGHLIGHTS .....	13
EVENTS .....	14
TRAINING, EQUITY, & ADVOCACY SERVICES.....	16
REGIONAL HEALTH EQUITY COALITION.....	18
YOUR IMPACT .....	20
VOLUNTEERS OF THE YEAR .....	20
INDIVIDUAL DONORS.....	21
CORPORATE DONORS .....	25
GET IN TOUCH.....	26

# A LOOK BACK



Since its inception, Transponder has been dedicated to nurturing healthy communities through a range of services, yet our core mission extends beyond this to cultivating strong relationships not only with our community and partners, but also within our organization itself. I want to extend a heartfelt appreciation to the entire Transponder team for your unwavering support and commitment to advancing our mission.

Over the past year, TransPonder has witnessed significant growth in community engagement, increased funding for our programs, and a remarkable expansion in staffing capacity by 1300%. This substantial growth has empowered us to extend our outreach efforts beyond Lane County to serve communities across the entire state of Oregon. Furthermore, we've continued to forge and fortify crucial partnerships with fellow community-based organizations throughout Oregon, all of whom share our passion for delivering life-changing services to marginalized individuals.

Through initiatives like the Legal ID Change Documentation program, the Gender Affirming Product Voucher program, and the recent establishment of Sylvia's Closet, we've been able to provide essential services to our community free of charge, fostering equitable access for queer and gender-expansive communities and addressing health disparities head-on. None of these achievements would have been possible without the generous support of our community, donors, grantors, and advocates, who have played pivotal roles in propelling our organization forward.

As we embark on a new year, I urge you to continue standing alongside us in our ongoing efforts to champion the rights and safety of LGBTQIA+ youth, gender-expansive communities, elders, and all underserved and underrepresented individuals. Let us remain steadfast in our commitment to being the voice of the voiceless and creating safe, inclusive spaces for all.

Here's to a promising journey ahead in 2024!

A handwritten signature in black ink, appearing to read 'Kyle Rodriguez-Hudson'.

Kyle Rodriguez-Hudson  
Executive Director

# WHO WE ARE

## MISSION

TransPonder is a transgender-founded and led nonprofit based in Eugene, Oregon providing support, resources, and education for the transgender and gender-diverse community and our allies.

Our mission is to foster healthy communities through wellness programs; support meetings, socials, and special events; trans-inclusive resources; and training and consultation services to improve the lives and outcomes of LGBTQIA2S+ people, emphasizing trans and gender-diverse Oregonians.

## VISION

Our vision and commitment is to address root causes of discrimination within and outside transgender, gender-diverse, intersex, lesbian, gay, bisexual, asexual, and queer communities through an intersectional social justice lens.

## GRATITUDE

We're thankful for our transcestors who helped pioneer queer liberation, with special thanks to Marsha P. Johnson and Sylvia Rivera, and for people who have inspired us to change and grow, including Maya Angelou, James Baldwin, and Kimberle Williams Crenshaw.

# OUR BOARD



**CASS AVERILL, BS**  
CO-FOUNDER, PRESIDENT  
HE/HIM



**GABY GARDINER**  
VICE-PRESIDENT  
THEY/THEM



**EMZ AVALOS**  
MEMBER-AT-LARGE  
SHE/HER



**MAX SKORODINSKY, MS**  
CO-FOUNDER, SECRETARY  
HE/HIM



**ANNA HELD**  
TREASURER  
SHE/HER



**JUDAH LARGENT**  
MEMBER-AT-LARGE  
HE/HIM

# OUR STAFF



**KYLE RODRIGUEZ-HUDSON, MBA, LPC**  
EXECUTIVE DIRECTOR  
HE/HIM



**BEN BROCK, BS**  
PROGRAMS DIRECTOR  
HE/HIM



**RANDALL BROCK, BA**  
IT & DATA SPECIALIST  
HE/HIM



**JACK FLUKINGER, BA**  
OFFICE MANAGER  
HE/HIM



**SARA SUMMERS, MS**  
DEI & OUTREACH MANAGER  
SHE/HER



**ANDREW HORAN, QMHA**  
TRAINING & OUTREACH SPECIALIST  
HE/HIM



**ANTONIO HUERTA**  
REGIONAL HEALTH EQUITY MANAGER  
HE/HIM/ÉL



**JULIET RUTTER, MS, GC**  
REGIONAL HEALTH EQUITY COORDINATOR  
THEY/THEM

# OUR STAFF



**MACKENZIE RICH**  
RESOURCE NAVIGATOR  
SHE/HER



**MELROSE MASK**  
CDC OUTREACH COORDINATOR  
SHE/HER



**BRYNN DEVEREUX, PSS, CRM, CADC-R**  
PEER SUPPORT SPECIALIST  
SHE/HER



**MIRRANDA RILEY, PHD**  
GRANT MANAGER  
SHE/HER



**MARLIE HEBERLING, BS**  
DEVELOPMENT MANAGER  
SHE/THEY



**OAKLEY RAE PHOENIX**  
DEVELOPMENT INTERN  
HE/HIM



**HOLLIS ANAJOVICH**  
DEVELOPMENT INTERN  
THEY/THEM



**SYDNEY DAY**  
EVENT INTERN  
SHE/HER

# QUEER RESOURCE CENTER

## 1185 ARTHUR STREET, EUGENE

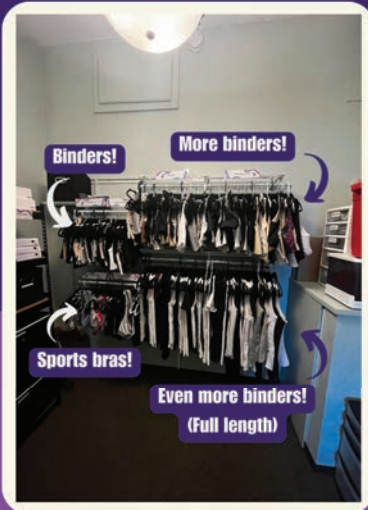
The Queer Resource Center was created by HIV Alliance and TransPonder to deepen our partnership and our commitment to providing care to the LGBTQIA community, especially the transgender and gender-diverse community.

Together, we provide a number of services and resources, including Sylvia's Closet, a space named for trans pioneer Sylvia Rivera that is dedicated to providing free access to gender-affirming products.

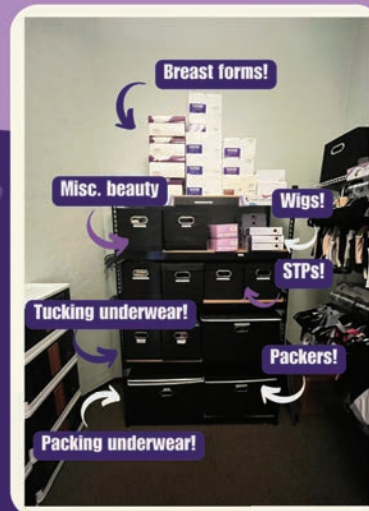
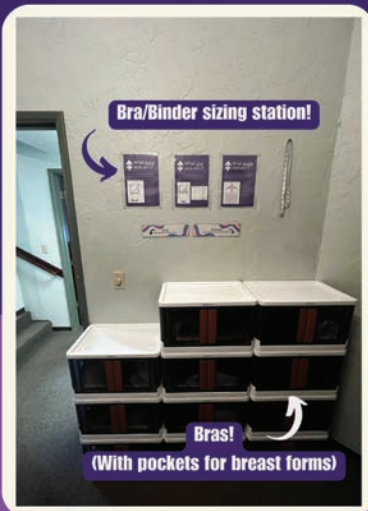
## SYLVIA'S CLOSET

- Gender-Affirming Products
  - Binders
  - Bras
  - Breast forms
  - Wigs
  - Lashes
  - Beauty supplies
  - Packers
  - Stand-to-pee devices
  - Packing underwear
  - Tucking underwear
  - Period underwear
- Hygiene Supplies

*Resource Room!*



*Resource Room!*





# SERVICES & RESOURCES



## **FOOD PROGRAM**

We supply fresh fruits and vegetables, bakery items, and more for free every Thursday as part of the Trillium Produce Plus Program with Food for Lane County.

## **HARM REDUCTION SUPPLIES**

We offer free harm reduction supplies such as needles, syringes, alcohol wipes, and sharps containers, and Narcan (nasal Naloxone) at the Queer Resource Center. We also deliver injection supplies free of charge.

## **STI TESTING**

Free STI testing for HIV, Hep C, and syphilis is available at the QRC. We also offer At-Home HIV Testing Kits dropped off at your house for free.

## **BEHAVIORAL HEALTH**

Our Behavioral Health program is free and service people ages 14 and older, specializing in members of the LGBTQIA+ community. We offer resource navigation, peer support and groups, substance use counseling, gender-affirming products, and more.

# BEHAVIORAL HEALTH

Our Behavioral Health program is FREE and serves folks ages 14 and older, specializing in people who are LGBTQIA+.

## RESOURCE NAVIGATION

TransPonder's has a resource navigator to help folks access resources and engage in our free programs, such as our gender-affirming products, legal identification change financial aid, or injection supplies programs.

## PEER SUPPORT

We offer peer services, including substance use counseling.

Our peers are solid advocates and help support community members' emotional health, wellness, and self-management of social and health challenges. They can also provide support during major transitions in life. All our peer services are free.

[LEARN MORE](#)

## BHRN-LC

TransPonder is a part of the Behavioral Health Resource Network of Lane County (BHRN-LC,) a collaborative group of service providers in Lane County, Oregon, to provide free harm reduction, treatment, and recovery outcomes for substance use.

## SUBSTANCE USE TREATMENT

There are a variety of services available for substance use disorder (SUD) treatment at TransPonder. We offer a comprehensive multidimensional assessment, ASAM, and will form a participant-led treatment plan with any necessary referrals for MAT (medication-assisted therapy), detox, and inpatient/IOP programs.

Our Certified Alcohol and Drug Counselors (CADCs) can create relapse prevention plans, reduce harm with accessible testing supplies, facilitate SUDs support groups, and offer one-on-one support in virtual, phone, or in-person settings to share tools and model hope and recovery.

# PROGRAMS



**SUPPORT GROUPS  
AFFINITY GROUPS  
CLUBS & CLASSES  
SOCIAL GATHERINGS  
COMMUNITY EVENTS**

# PROGRAMS

We offer a variety of free programs for LGBTQIA2S people and our allies. These programs are community-driven, meaning that they are chosen and developed based on regular feedback from the community.

## GROUPS

**Queer, Trans & Disability Group**  
Thursdays @ 6-7p  
*Google Meet*

**QTBIPOC Group**  
4th Tuesday @ 6-7p  
*Google Meet.*

**Trans Community Support Group**  
Second Saturdays @ 11a - 12:30p  
*Contact us for the location*

**Trans Community Support Group**  
Fourth Saturdays @ 3:30p  
*Google Meet*

**TransParent Support Group**  
Second and Fourth Saturdays @ 11a - 12p  
*Theo's Coffee House*

**TransParent Support Group**  
Third Saturdays @ 11a - 12:30p  
*Google Meet*

## CLUBS & CLASSES

**TransPonder Book Club**  
Tuesdays @ 5-6p  
*Google Meet*

**Queer Family Yoga Class**  
Wednesdays @ 6-7p  
*Sheldon Community Center*

**Gender Diverse Yoga Class**  
Wednesdays @ 7-8p  
*Sheldon Community Center*

## GATHERINGS

**We/Us/Ours Social Hour**  
Last Wednesdays @ 6-8p  
*Public House*

**Trans & Allies Social Hour**  
First Saturdays @ 10a - 12p  
*Theo's Coffee House*

**Queer Community Day**  
Quarterly on a Saturday  
*Queer Resource Center*

## PAST WORKSHOPS

**Hair, Makeup, Voice, Resume**  
Hosted in January

**Voice Workshop**  
Hosted in October

**Burlesque Workshop**  
Hosted in October

[LEARN MORE](#)

# IMPACT HIGHLIGHTS

**13,591**

VIEWS OF THE ONLINE RESOURCE DIRECTORY



**2023**



**472**

INJECTION SUPPLY DELIVERIES

2022: 294 | 2021: 81 | 2020: 49

**1335**

HOUSEHOLDS SERVED FREE FOOD PROGRAM

2022: 409 | 2021: 51



**41**

ID CHANGES



**299**

GENDER-AFFIRMING VOUCHERS

2022: 110  
2021: 44  
2020: 37



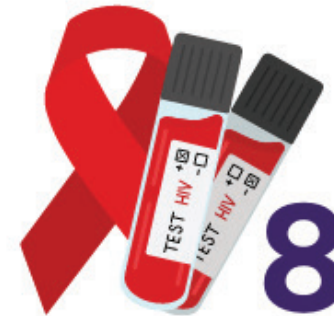
**750**

GENDER-AFFIRMING PRODUCTS GIVEN AWAY

**29**

BOOKS GIVEN AWAY

FOR BOOK CLUB MEMBERS



**82**

HIV TESTING KITS GIVEN OUT



## HIGHLIGHTS

### TRANS DAY OF VISIBILITY

Interviewed community members for The Trans Visibility Project and hosted an in-person gathering at MECCA

### SUMMER CELEBRATIONS

Tabled at 4J High Pride, Cascade Raptor Center Pride Night, Pride at PK Park, and more

Hosted 13 Trivia Tuesday nights at Cornucopia in Springfield

### EUGENE PRIDE IN THE PARK

Enjoyed a sunny day at Alton Baker Park, meeting new faces

### TRANS WILD FOREST FROLIC

Partnered with Mt. Pisgah Arboretum and Cascadia Wildlands to offer a day of safe, inclusive fun in nature

### ANNUAL GALA

Raised over \$28k at MasQUEERade Gala

### TRANS DAY OF REMEMBRANCE

Partnered with UO LGBT Education Services and Support to host an in-person and live-streamed TDOR service

# EVENTS

## LOOKING AHEAD

MARCH  
**TRANS DAY  
OF VISIBILITY**

JUNE  
**BURLESQUE BINGO**

AUGUST  
**EUGENE PRIDE  
IN THE PARK**

SEPTEMBER  
**TRANS WILD  
FOREST FROLIC**

OCTOBER  
**MASQUEERADE GALA**

NOVEMBER  
**TRANS DAY OF  
REMEMBRANCE**

[LEARN MORE](#)



## TRAINING, EQUITY, & ADVOCACY SERVICES

Transgender people are a diverse community representing all racial and ethnic backgrounds. While trans people are increasingly visible in our culture, they still face severe discrimination, stigma, and systemic inequality; therefore, our work has to be intersectional. Positive change for the transgender community is created through supporting personal efficacy from within the trans/gender-diverse community, supporting institutional and systemic change in the broader community through consultation, training, and education, and continuing training practices to create a welcoming and inclusive environment.

Whether you are at the beginning of this work or you wish to continue building on a solid foundation, TransPonder's TEAS team will meet you where you are and work alongside you to foster a safe, empathetic, and honest conversational space so everyone can grow in their knowledge and advocacy skills together.





# TRAINEES

Pipeworks Studios	Lane Community College
Head Start of Lane County	PacificSource
Oregon Health Authority	A Family For Every Child
Samaritan Health Services	City of Eugene
Forest Grove Foundation	Ridgeline Montessori
Northwest Human Services	Cascades Raptor Center
Ananda Seva Village School	Springfield School System
Hershner Hunter LLP	Eugene Public Library
Planned Parenthood of Southwestern Oregon (PPSO)	Laurel Hill Center
Kairos Tempo	The Nel
Holiday Inn Express	Senior & Disability Services
Lane County	Salem-Keizer Public Schools
Building Healthy Families	Oregon State University
University of Oregon	Looking Glass New Roads
Mountain Rose Herbs	Kids Community Center
Plaza (Centro Latino Americano)	Willamette Valley Fire Collaboration-EcoStudies Institute
First National Church	Pacific University
The BeLonging Space & Eugene Pride	90by30 and the Center for the Prevention of Abuse and Neglect
Oregon Family Support Network	Shift Community Cycles
Organic Materials Review Institute (OMRI)	HIV Alliance
Eugene Family YMCA	

# TEAS

## TRAININGS

Gender 101: VariTEAS  
Gender 102: The Bold Pack  
**Gender 101: Youth Edition (NEW!)**  
**Bias Interrupted: Implicit to the Explicit & All the Bias in Between (NEW!)**  
**All Aboard the Allyship (NEW!)**  
**Cup of Privileges (NEW!)**  
**Spilling the Tea: Acts of Exclusion (NEW!)**  
**The Tale of Language Lore (NEW!)**  
**Bias: Leadership Edition (NEW!)**  
**Privilege: Leadership Edition (NEW!)**

## LOOKING AHEAD

In the coming year, TEAS is focused on a couple of key goals, including the creation and implementation of an in-depth, intersectionality-focused training program and increasing their capacity for additional course development through the addition of new trainers.

**CONTACT TEAS**

## 2023 HIGHLIGHTS

In 2023, the TEAS program developed seven new trainings, covering topics from bias to privilege, created five training packages designed to serve large and small organizations, and introduced "After TEAS," a post-training session that offers participants a safe, casual, and nonconfrontational setting in which to ask questions or seek clarification to anything they may have been too shy or uncomfortable asking during the training session.

In addition, TEAS trained over 40 organizations and participated in 18 community outreach events this past year, including the NAACP MLK Day event, the Lane Community College Resource Fair, the Building Bridges Conference, the Black Cultural Festival, and multiple Pride events such as Douglas County Pride, EugPRIDE in the Park, 4J Pride at North Eugene High School, and the University of Oregon's Pride Festival.

# REGIONAL HEALTH EQUITY COALITION

## RISE (REGIONAL INTERSECTIONAL SYSTEMS-CHANGE FOR EQUITY) OF THE UMPQUA AND WILLAMETTE VALLEYS



# RISE

## OF THE UMPQUA AND WILLAMETTE VALLEYS

### WHAT IS HEALTH EQUITY?

Health equity is the state in which everyone has a fair and just opportunity to attain their highest level of health.

### WHAT IS A REGIONAL HEALTH EQUITY COALITION (RHEC)?

Regional Health Equity Coalitions (RHECs) are independent, community-driven groups made up of people who work to help others. The core function of RHECs is to identify the most pressing issues around health, and to work on policy and community solutions.

### WHO IS RISE?

RISE stands for Regional Intersectional Systems-change for Equity. We serve the Umpqua and Willamette Valleys (specifically Lane and Douglas Counties,) especially those in the area who are Asian/ Pacific Islander, Black/African Americans, immigrants, Latine/x, LGBTQIA2S+, low-income populations, Native Americans, people experiencing disabilities, and rural populations.

# REGIONAL HEALTH EQUITY COALITION

## MISSION AND VISION

Our mission is to work as a collective movement utilizing an intersectional lens to center around the needs and voices of underserved and underrepresented community members to address the root causes of health inequities caused by systemic oppression.

Our vision is to remove the barriers surrounding all inequities, allowing individuals the opportunity to lead healthy and fulfilling lives as they see fit.

## LOOKING AHEAD

In the coming year, RISE will be focused on several further goals for the Health Equity Needs Assessment, including the creation of a data report, the dissemination of the information through multiple channels, and the comparison of data with other local sources.

In addition, they will be working on investing in meaningful partnerships, specifically by giving financial support to organizations doing equity work in our service area. They also will be continuing to develop relationships in order to meaningfully engage with local communities, and support events that promote health equity and raise awareness of community partners such as health resource fairs in schools and in the wider community.

Furthermore, RISE will continue to collaborate with other RHECs to support the creation of materials that will promote awareness of our work statewide.

## 2023 HIGHLIGHTS

In 2023, RISE's main focus was the development of a Health Equity Needs Assessment survey to collect data around barriers to health equity. They administered the survey in both English and Spanish, and they received more than 500 responses. They also held nine focus groups for additional data collection, three in Lane County and six in Douglas County.

In addition, RISE provided financial support to several community-based organizations that offer direct services in Lane and Douglas County to our priority populations, and participated in events to inform the community about resources in their service area.

Finally, RISE participated in nine county-wide and five state-wide community groups, as well as with other RHECs to facilitate outreach to legislators and policy-makers.

[LEARN MORE](#)

# YOUR IMPACT



**TO OUR INTERNS  
FACILITATORS  
DELIVERY DRIVERS  
CLASS LEADERS &  
VOLUNTEERS,  
THANK YOU!**

**VOLUNTEERS  
OF THE YEAR**

**KAT ROBERTS  
SERENITY LEVIN  
JENNI VIRGO**

# YOUR IMPACT

## THANK YOU TO OUR DONORS

**938**

**TOTAL  
DONATIONS**

**303**

**FIRST TIME  
DONATIONS**

**513**

**TOTAL  
DONORS**

**210**

**REPEAT  
DONORS**

**\$114,667**

**TOTAL FUNDS RAISED**

- ADAM LEONARD
- ADRIENNE PARKER
- AIWAN HAZARI
- ALANNA BAUMANN
- ALISA HAMPTON
- ALLEGRA JASPER
- ALLISON MCGILLIVRAY
- ALMA HESUS
- ALYSON WIRFS
- AMANDA NOBELRY
- AMY CARSON
- AMY EVANS
- AMY FELLOWS
- ANA
- ANA BELTRAN
- ANDREA SEAGER
- ANGELA KEITH
- ANGELA MUNOZ
- ANGELA PERRY
- ANN LEVINE
- ANNE FILLMORE PALMER
- ANNEKRISTINE NORRIS
- ANTOINETTE BIERMAN
- ARI BLANK
- ASH APELZIN
- ASH LEY
- AUDREY QUINN
- AVERY FAY
- AXEL GERBER
- BARBARA BRANDT
- BARBARA EARLEY
- BEN TOVERBYZUCC
- BETH HUTCHINS
- BETHANY JONES
- BILL TIMOTHY WALTER
- BILLY ROBERTS
- BLUE CROOK
- BONNIE FAZIO
- BRIAN BAILEY
- BRIGID OVERTON
- BROOKE SMITH
- CALEB WELLS

# YOUR IMPACT

- CAMERON STOKES
- CAMILLE KAPLAN
- CARLA BOLLINGER
- CARLY BLEMMEL
- CARMEN KENDALL
- CARRIE CUBBAGE
- CARTER EMERSON
- CAT ANDREWS
- CATHERINE MACLEOD
- CATHIE JARBOE
- CECELIA MERAKI
- CEDAR GOODRO
- CEDAR LOVE
- CELINDA TRAVELSTEAD
- CHARLES DENSON
- CHERYL BROWN
- CHRISTINA GLASS
- CLAIRE DEDERER
- CLARISSA VARIHUE
- CLAUDIA ELENA
- CLOVER WIER
- COLLEEN COUGHLIN
- CORY MCGUIRE
- CRYSTAL GESSELE
- CRYSTAL MCPHEETERS
- CYNTHIA HEALEY
- CYNTHIA MAHAFFEY
- DALTON PLUMMER
- DANIEL CLOSE
- DANIEL DOWNES
- DANNY ALTIZER
- DAVID SAVAGE
- DAWN GEORGESON
- DEBORAH KOLB
- DEBRA SAVELLE
- DEREK STEPP
- DOLLIE VAUGHN
- DOMINIC LOPEZ
- DUVESSA M MACCARVILL
- DW KANA
- DYLAN MOTTAZ
- E. ROSS SCHWARZ
- EDWARD GOEHRING
- ELISA AGUILERA
- ELLIOT BERKMAN
- EMILY ALDER
- EMILY MEYERS
- EMMA REED
- EMMANUELLE AVALOS
- ERIC GORDON
- ERIN MOORE
- EYTAN BERNET
- FAITH DODD
- FINN JACOBSON
- GARDNER
- GEORGEANN HARTY
- GEORGIA SMITH
- GINGER DANIELS
- GLENN OLHEISER
- GREG ALLENSWORTH
- GRETA LINDBERG
- GREY PIERCE
- GWENN CODY
- HAILEY OCKINGA
- HANNAH ASHBY
- HEATHER LOOP
- HEIDI WOOD
- HELEN SHEPARD
- HELEN TOWLE
- HELENKA ZEMAN
- HILLARY FERGUSON
- ISABEL EDELBLUTE
- JACKIE BERNARD
- JACKIE GRIFFIN
- JADE
- JAMES MATTRAVERS
- JAMES PEARROW
- JAN JAMIESON
- JANE LUCE HART
- JANE RATZLAFF
- JANET HARDY
- JARED PRUCH
- JAY TAYLOR
- JEAN STONESTROM
- JEANNETTE CARTE
- JEFF POSSICK
- JEN SMITH
- JENEFER HUSMAN
- JENNI VIRGO
- JENNIFER BURBANK
- JENNIFER LYNNE
- JENNIFER MONEGAN
- JENNIFER MORRISON
- JEREMY BLANCHARD
- JERRID WOLFLICK
- JESS FUJIMOTO

# YOUR IMPACT

- JESSE MERZ
- JESSICA ANN
- JESSICA BAKER
- JESSICA HIGGINBOTHAM
- JESSICA HUTCHINGS
- JESSICA JACKSON
- JESSICAH SNIDER-REGNERUS
- JEYA AERENSON
- JO BARTLETT
- JODI LEMMER
- JOHN GARRETT
- JOHN KLEINKOPF
- JOHN PORTNOY
- JOHNNY HART
- JONATHAN LEMER
- JONETTA KASER
- JONETTA RUPPERT
- JORDAN HARRIS
- JOSHUA TRIPP
- JUDITH RAISKIN
- JULIA
- JULIA SANDIDGE
- JULIE BAILEY
- JULIE COLLINS
- KALI HUGHES
- KALIL COHEN
- KARA VONHUDSON
- KAREN REEMAN
- KARI VAN DUREN
- KARI VAN DUREN
- KARI VAN DUREN
- KARLA DE SOUSA HODGE
- KARON BARTER
- KATHARINE ALY BRADY
- KATHERINE TOFTE
- KATHRIN KOTTEMANN
- KATHY GRIMWOOD
- KATIE COX
- KATIE FITZPATRICK
- KAYCEE MORGAN
- KBJ
- KELLY DEL SORDI
- KENNEDY SCHULL
- KENNETH SINGER
- KENYON PLUMMER
- KEVIN MCGUINNESS
- KIERSTIN DUNAVANT
- KIRA BUFKA
- KIT JUNYA
- KRISTEN THORP
- LARISSA M. ENNIS
- LAURA CASTLE
- LAUREL TALLEY
- LAURIE TRIEGER
- LEAH ROSIN
- LEIGH ANNE JASHEWAY
- LESLIE
- LESLIE FARRELL
- LILLIE SPAFFORD
- LINDA HOWARD
- LINDA STANDLEY
- LINDSAY ROSE
- LISA PIKE
- LISA STOUT
- LISSA WEEN
- LIZ BOHLS
- LUKE N. GOOD
- LYN SAY DEPAOLI
- M DOT CHRISTIAN
- MARGARET BOSTROM
- MARIA GERSPACHER
- MARICELA AMEZOLA
- MARISSA SOLINI
- MARTHA BENSON
- MARTIN LEWIS
- MARTIN WILDER
- MARY HAMILTON
- MARY PENNING BORNES
- MARY ROARK
- MARY WOOD
- MATT BAHM
- MATT JONES
- MATTHEW VIVEIROS
- MAX SKORODINSKY
- MAXIMILLIAN BROWN
- MAXWELL DAVIS
- MAYA VAGNER
- MEGAN DORRAH
- MELISSA SANFORD
- MELODY BARAN
- MELODY DODD
- MICHAEL ARONSON
- MICHAELA HOWARD
- MICHELLE COOPER
- MICHELLE MCCLURE

# YOUR IMPACT

- MICHELLE STAPLES
- MICHELLE VARGA
- MIKE BIGLAN
- MIKE CHAPUT
- MIKE JACOBO
- MISSI MARX
- MITCH BURGER
- MORGAN LEWIS
- MORGAN SEITZER
- NADIA TELSEY
- NANCY BLACKWELDER
- NANCY BOYETT
- NANCY COUGHLIN
- NANCY HIGHTOWER
- NANCY WEST
- NAOMI BETH
- NATALIE CRELLIN
- NATALIE GILLESPIE
- NATHAN LAMOREAUX
- NICHOLETTE HINCAPIE
- NORI DUFFY-SEELY
- O'NIELL OSBORN
- OLIVIA STROMME
- ORION ROSS
- PAM FIX
- PAMELA HOUSTON
- PAMELA MCMAHON
- PARKER DUNBAR
- PARKER EMERSON
- PAT ADAMS
- PHOEBE BORDADORA
- RACHAEL DANIEL
- RACHEL CAZAVILAN
- RACHEL KRAMER BUSSEL
- RACHEL SHEPARD
- REZENDE
- RICHARD CISSEL
- RIXTA FORSTER
- ROBERT STEIN
- ROBYN DORMOIS
- ROGER VILLAREAL
- RUBY LEE
- RUTH FLOWERS
- SAGE WINFREE
- SALLY HUNT
- SANDY STAFFORD
- SARA MEYER
- SARAH BAST
- SARAH LAMBERT
- SARAH WIGHTKIN
- SERENITY LEVIN
- SHAMMY LYNN
- SHANNA CEJKA
- SHARANE NORRIS
- SHARON BARLOWPALM
- SHEENA MOORE
- SHELLY KREHBIEL
- SHERRI JONES
- SIOBHAN O'CONNOR
- SKYLER STEWART
- SPENCER GOODRO
- STEPHANIE EDWARDS
- STEPHEN MILLER
- STEVE HAMPTON
- SUE MILLNER
- SUMMER ANJANETTE
- SUSAN K MILLMAN
- SUSAN RATZLAFF
- SUSAN WARTENBEE
- TED WELCH
- TERESA GUTIERREZ
- TERESA STEVENS
- TERI SHAKAL
- TESSA YODER
- TIM MCCANNA
- TOBY ENSIGN
- TORE' MURVIN
- TREON KRANZ
- TRICIA ZAVALA
- TY SUNDQUIST
- V JANE ROSSER
- VALERIE OLNEY
- VERONICA SANCHEZ
- VIRGINIA LANDGREEN
- WENDY HARRIS
- WHITNEY GUTHRIE
- ZOE HOLUB

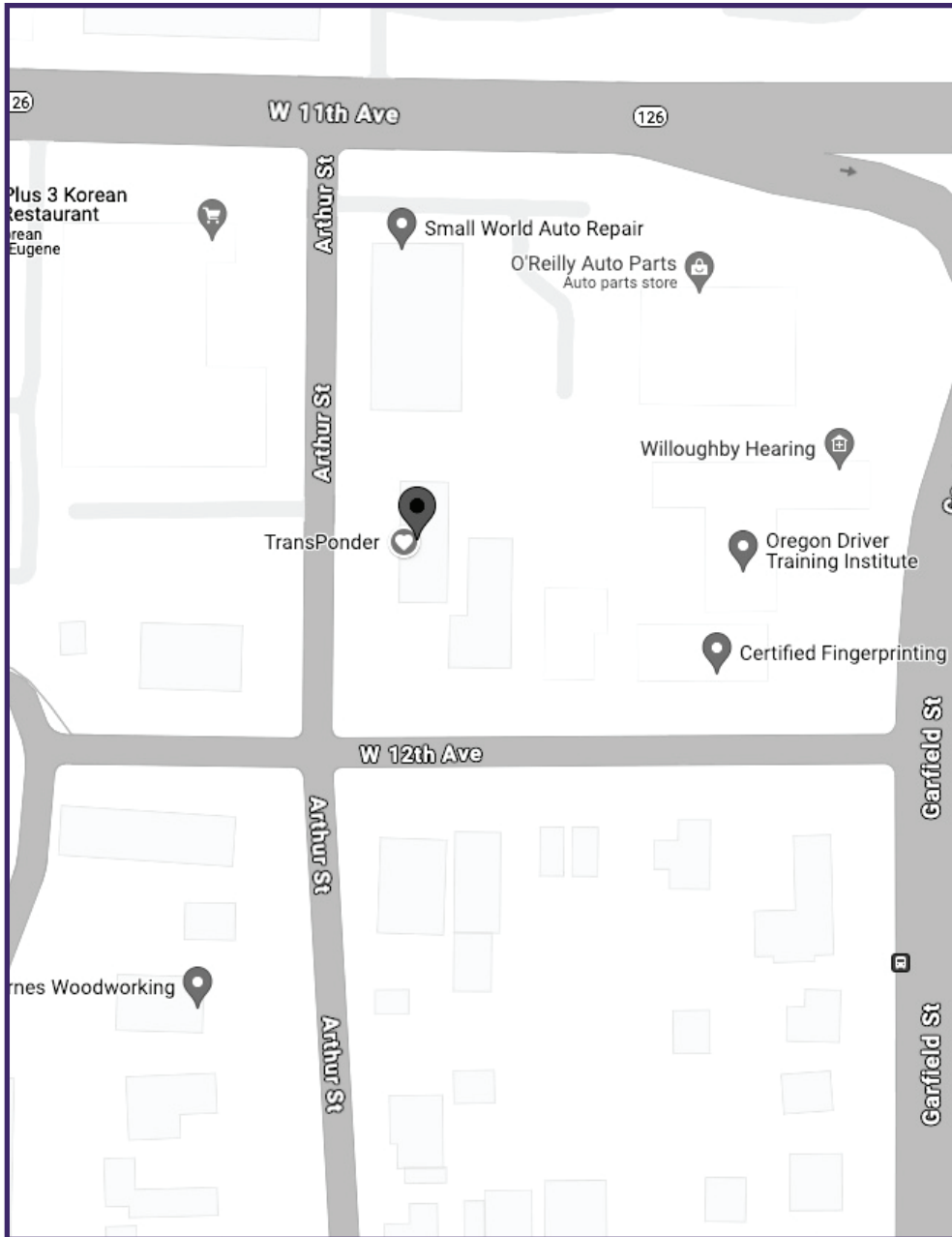


# YOUR IMPACT

## THANK YOU TO OUR CORPORATE DONORS

- ABBONDANZA PUBLISHING, LLC
- B. HOLDER DESIGNS
- BANYAN COACHING AND CONSULTING
- BARRE3 EUGENE
- BIERLY BREWING, LLC
- BOOBIES AND NOOBIES PODCAST
- CAMPBELL FAMILY CHARITABLE FUND
- CAPITELLO WINERY
- CASCADES RAPTOR CENTER
- CASCADIA WILDLANDS
- COLUMBIACARES
- CORNUCOPIA
- CROW AND CART
- DELTA KAPPA GAMMA SOCIETY
- ELEVATION BOULDERING GYM
- ERIC BRAMAN, INDEPENDENT ARTIST
- EUGENE ART HOUSE
- EUGENE EMERALDS BASEBALL CLUB
- EUGENE FENCERS CLUB
- EUGENE SCIENCE CENTER
- FERMATA BALLET COLLECTIVE
- FIRST CONGREGATIONAL CHURCH EUGENE, UNITED CHURCH OF CHRIST
- GOMEZ MADDAMS
- GOOD CLEAN LOVE, INC.
- HARLEQUINN BEADS
- HOP VALLEY BREWING COMPANY
- IMPERIAL SOVEREIGN COURT OF THE EMERALD EMPIRE
- MECCA
- MOON MAIDEN TATTOO
- NATCA CHARITABLE FOUNDATION
- NEWTWIST
- NORTHWEST CANOE TOUR
- OREGON CONTEMPORARY THEATRE
- PACIFICSOURCE COMMUNITY SOLUTIONS
- PANORAMA GLOBAL FUNDS
- PEAK6
- PORTLAND TRAIL BLAZERS
- PRINCE PUCKLER'S ICE CREAM STORE
- PROGRESSIVE GROUP OF INSURANCE COMPANIES
- QUEEN BREE NAILS
- RAINBOW VALLEY DESIGN AND CONSTRUCTION
- RMC RESEARCH
- RYE BAR AND RESTAURANT
- SCHWAB CHARITABLE
- SONGSMITH STUDIO
- SPECTRUM EUGENE
- ST. MARY'S EPISCOPAL CHURCH
- STANDARD INSURANCE
- SWEET CHEEKS WINERY
- TARGET FOUNDATION
- THE CLOTHES HORSE
- THE GRADUATE EUGENE
- TRANS JUSTICE FUNDING PROJECT
- UNITED WAY OF LANE COUNTY
- VMWARE FOUNDATION (BRIGHTFUNDS)
- WAGS! DOG EMPORIUM
- WOW HALL
- YARBS AND ROOTS

# GET IN TOUCH



## VISIT

**1185 ARTHUR ST, EUGENE**

MONDAY - THURSDAY, 9A - 5P; FRIDAY BY APPOINTMENT



## CALL

**541-321-0872**



## EMAIL

**[INFO@TRANSPONDEROREGON.ORG](mailto:INFO@TRANSPONDEROREGON.ORG)**



## MAIL

**PO BOX #827**

**EUGENE, OR 97440**



## ONLINE

**[TRANSPONDEROREGON.ORG](http://TRANSPONDEROREGON.ORG)**

SOCIAL MEDIA



DONATE

